

## CHECK OUT OUR ALUMNI TOP DESTINATIONS



University of Pennsylvania • University of California, Berkeley  
University of California, Los Angeles • University of Michigan  
Northwestern University • University of Toronto  
National University of Singapore • Nanyang Technological University  
Hongkong University of Science and Technology  
University College London • University of British Columbia  
University of Melbourne • Babson College  
University of Washington, USA • University of the Arts, London  
Moscow University of Physics and Technology  
Purdue University • University of Sussex  
University of California, San Diego • University of Nottingham



“BINUS SCHOOL Simprug wasn’t just a place to learn, but a place to grow and transform the mind. I am thankful for the overwhelming support I received in reaching my goals.”

**Alexandra Audrey Tirtaguna**  
Politics Philosophy Economics at  
University of Pennsylvania



**IB World School**



**PROUD BINUSIANS**

## ELECTIVES & CLUBS

ELECTIVES are extended curricular programs for EY 1 to Gr. 3 and CLUBS are for Gr. 4 – 11 students with adult supervision (teachers or parents).

We are running 56 CLUBS and 22 ELECTIVES accommodating 9 FOCUS AREAS: Arts & Music, STEM, SPORTS, Community and Leadership, Entrepreneurship, Humanitarian (Service as Action), International Relations, Public Relations, and Literature.

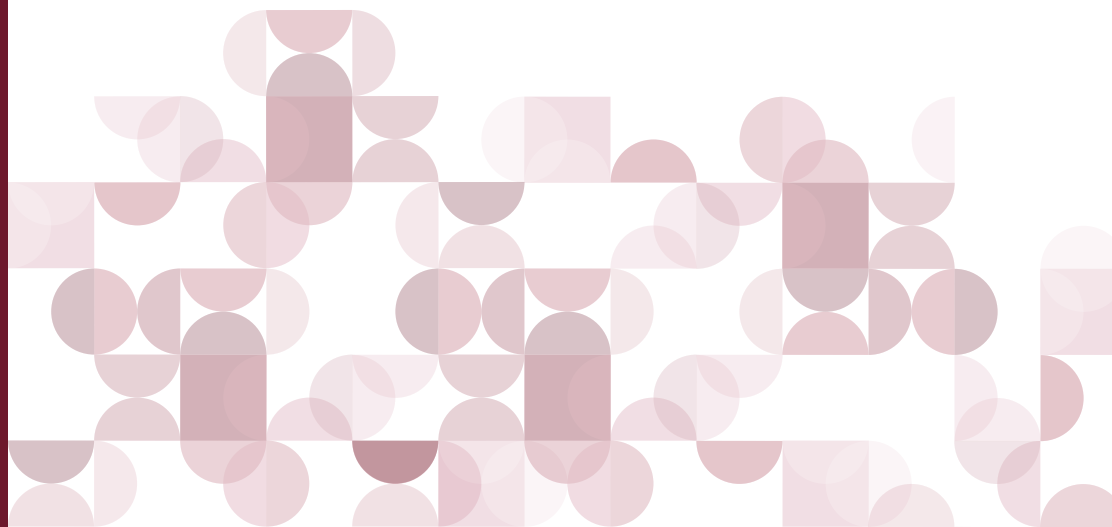
- Little Coders (Scratch Programming Language)
- Coders Club Senior (Python Programming Language)
- Creative Space
- Apprentice Engineering for Kids
- Senior Robotic
- Aerial Robotic Drones
- Junior Contemporary Ensemble
- Singing Club
- MUN
- Public Speaking
- WSC
- GIN Binus
- Dance
- Basketball
- Soccer
- Volleyball
- Animation
- Clay Animation
- Comic Club
- Digital Drawing
- Writers Club
- Junior Startup

**For more information, please contact our Admissions Team:**

Jl. Sultan Iskandar Muda Kav. G-8  
Jakarta Selatan 12220, INDONESIA  
Tel : (021) 724 3663 Ext. 4120 – 4122  
Email : [admissions@binus.edu](mailto:admissions@binus.edu)

BINUS SCHOOL Simprug  
 @binusschool\_simprug  
[simprug.binus.sch.id](https://simprug.binus.sch.id)

## A World-class Community of Proud and Outstanding Achievers



For more than 38 years, the BINA NUSANTARA Group has maintained a fine reputation for innumerable positive contributions to the country.

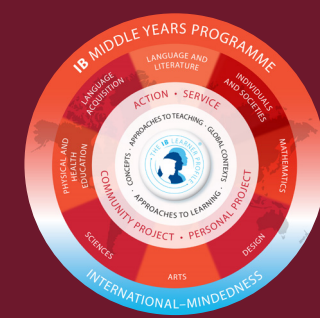
Since 1998, one of its units, BINUS SCHOOL Simprug, has proved its commitment towards education by providing a strong foundation for further study and instilling a love of learning.

## CURRICULUM

We are authorized in all three programmes as an IB World School :



**PYP (Primary Years Programme):**  
Pre-School - Grade 5

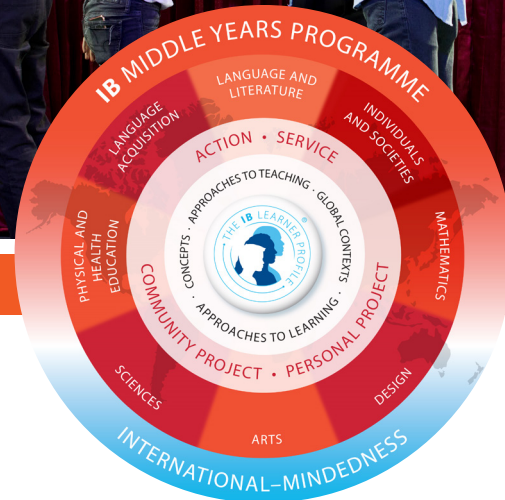


**MYP (Middle Years Programme):**  
Grades 6 - 10



**DP (Diploma Programme):**  
Grades 11 and 12





We have been authorized by the International Baccalaureate to offer the Primary Years Programme (PYP), an inquiry-based, concept-driven and transdisciplinary curriculum for learners in the 3 – 12 age range. Our curriculum also incorporates the Indonesian national requirements, and we place great emphasis on the acquisition of knowledge, understanding of concepts, application of various skills, and student agency.

Our programme of inquiry focuses on the following subject areas :

- Arts (Visual Arts, Music, Dance)
- Languages (English, Chinese, Indonesian)
- Mathematics
- Science
- Social Studies
- Personal and Social Education
- Physical Education



The Middle Years Programme model is holistic in that it develops the positives character attributes of the learner profile within an aligned structure of eight subject groups and disciplines.

All MYP students will study eight different subjects :

- Language & Literature
- Individual & Societies
- Design
- Sciences
- Language Acquisition
- Mathematics
- Arts
- Physical Education

Program requirements include:

Community Project and Service as Action.

Personal Project: is a significant body of work produced over an extended period and is a product of the student's own initiative.



BINUS SCHOOL Simprug established its Diploma Programme (DP) in 2007, with an initial average score which was above the world average. BINUS SCHOOL Simprug has consistently produced student scores above the world average for 10 years, achieving prefect DP Scores of 45 out of 45 for 3 years in a row.

All DP students take six subjects, one from each of the following groups:

- Studies in Language & Literature (English A, Indonesian A, and Korean A)
- Language Acquisition (English B, Indonesian B, Mandarin B and French Ab Initio)
- Individuals & Society (Business Management, Economics, History, Information Technology in a Global Society and Psychology)
- Experimental Sciences (Biology, Chemistry, Physics and Computer Science)
- Mathematics (Mathematics Analysis & Approaches HL/SL, Mathematics Applications & Interpretation HL/SL)
- The Arts (Visual Arts HL/SL and Theater HL/SL) or Electives

In addition to the subjects, students fulfill three core elements of the Diploma Programme. They are :

- Extended Essay (EE)
- Theory of Knowledge (TOK)
- Creativity, Action and Service (CAS)